

# Majestic

Majestic Manufacturing, Inc. • P.O. Box 128  
4536 State Route 7 • New Waterford, Ohio 44445

**SUBJECT: STABILIZER ASSEMBLY ON ALL TM1400 AND TM1800  
SCOOTER BUILDINGS**

**ATTN: OWNER/OPERATOR,**

This Bulletin pertains to operation of your Majestic unit. This Service Bulletin *must* remain with owner's manual. If you have any questions regarding this Bulletin, contact our office at (330) 457-2447, M-F 8:00 a.m.-4:30 p.m. E.S.T. • Fax 457-7490

## SERVICE BULLETIN

Date: May 1, 1991

S.B. Number: 91-4

Notice:

This service bulletin is being issued to all owners/operators of the TM1400 and TM1800 scooter buildings to inform them of the importance of the stabilizer assembly installed on this model scooter building.

This stabilizer assembly is installed to the gooseneck assembly (porch) at our factory for the safe raising and lowering of this assembly and must be ATTACHED at all times and periodically inspected for any weld or parts failures.

Any failures in this assembly must be corrected before any further operation of the gooseneck assembly. Failure to comply with this bulletin may result in serious injury to personnel involved with this ride and Majestic can not be held responsible for those injuries.

Inspect for cracks or failures annually.

Inspect these two weld areas for any cracks or weld failures quarterly or after every third operation of gooseneck; whichever ever may come first. Inspect and replace spring if broken and coat with grease annually.

Supplement to this bulletin will be issued advising you of Majestic Mfg., recommendation for adding a safety feature to your ride, in the field, if you so desire.

This service bulletin must remain with owner's manual at all times. If you have any questions on factory standards or procedures on our equipment contact Majestic Manufacturing, Inc. during business hours 8:00am to 4:30pm Monday through Friday Eastern Standard Time at 330-457-2447.

# Majestic

Majestic Manufacturing, Inc. • P.O. Box 128  
4536 State Route 7 • New Waterford, Ohio 44445

**SUBJECT: POST TO TOP INSULATOR CONVERSION**

**ATTN: OWNER/OPERATOR,**

This Bulletin pertains to operation of your Majestic unit. This Service Bulletin *must* remain with owner's manual. If you have any questions regarding this Bulletin, contact our office at (330) 457-2447, M-F 8:00 a.m.-4:30 p.m. E.S.T. • Fax 457-7490

## SERVICE BULLETIN

Date: May 1, 1991

S.B. Number: 91-5

Notice:

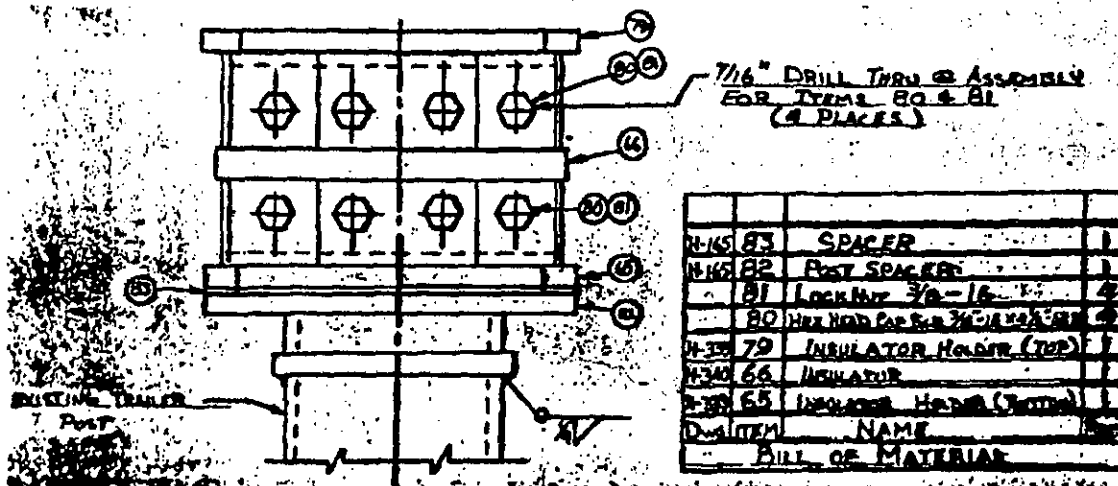
Majestic scooter buildings, TM1400 and TM1800 built prior to serial no. 2121 utilizes a wood insulator design to insulate the trailer and top assemblies. This design may be converted in the field by ordering necessary conversion parts shown in view below which uses a durable plastic type insulating material in place of wood.

These parts are readily available and may be ordered directly from our service and parts department.

When ordering, give model of building, serial no. and year manufactured.

This service bulletin must remain with owner's manual at all times.

If you have any questions on factory standards or procedures on our equipment contact Majestic Manufacturing, Inc. during business hours 8:00am to 4:30pm Monday through Friday Eastern Standard Time at 330-457-2447.



**Dedicated to Safety in the Amusement Industry**

# Majestic

Majestic Manufacturing, Inc. • P.O. Box 128  
4536 State Route 7 • New Waterford, Ohio 44445

**SUBJECT: RAISING AND LOWERING DECK SAFETY**

**ATTN: OWNER/OPERATOR,**

This Bulletin pertains to operation of your Majestic unit. This Service Bulletin *must* remain with owner's manual. If you have any questions regarding this Bulletin, contact our office at (330) 457-2447, M-F 8:00 a.m.-4:30 p.m. E.S.T. • Fax 457-7490

## SERVICE BULLETIN

**Date:** May 1, 1991

**S.B. Number:** SB 91-1 Supplement to service bulletin 91-1

**Notice:**

91-1 and the safety decal referred to emphasizes the importance of maintaining the hoist system to "FACTORY STANDARDS". This supplemental letter is being supplied to all of our customers explaining what the phrase "FACTORY STANDARDS" means.

### DECK OPERATING CABLES:

1. Inspect hoist cables for:
  - A. Rust appearing to come from interior of cable
  - B. Evidence of previous corrosion from pitted condition of wires
2. Severe stretching occurring in a short section of a cable indicated by a reduced diameter in the cable.
3. Severe damage such as "kinking", broken strands or "bird caging".
4. Any strand or strands 75% broken.
5. If cables are found damaged and must be replaced, both cables must be replaced at the same time.

### 12 VOLT BATTERY:

1. Must be at "FULL CHARGE" at all times to insure proper operation of 12 volt winch motor.

This service bulletin must remain with owner's manual at all times.

If you have any questions on factory standards or procedures on our equipment contact Majestic Manufacturing, Inc. during business hours 8:00am to 4:30pm Monday through Friday Eastern Standard Time at 330-457-2447.

# Majestic

Majestic Manufacturing, Inc. • P.O. Box 128  
4536 State Route 7 • New Waterford, Ohio 44445

**SUBJECT: RAISING AND LOWERING HYDRAULIC GOOSENECK SAFETY**

**ATTN: OWNER/OPERATOR,**

This Bulletin pertains to operation of your Majestic unit. This Service Bulletin *must* remain with owner's manual. If you have any questions regarding this Bulletin, contact our office at (330) 457-2447, M-F 8:00 a.m.-4:30 p.m. E.S.T. • Fax 457-7490

## SERVICE BULLETIN

Date: May 1, 1991

S.B. Number: SB91-2 Supplement to service bulletin 91-2

Notice:

91-2 and the safety decal referred to emphasizes the importance of maintaining the gooseneck assembly to factory standards. This supplement letter is being supplied to all of our customers explaining what the phrase "FACTORY STANDARDS" means.

1. Inspect shock absorbers to see that they are in good condition and installed correctly.
2. King pin is free of weld cracks or abnormal wear.
3. Pivot arms must be free of weld cracks and end caps must be in place.
4. Pivot brackets must be free of weld cracks.
5. Folding support plate must be free of weld cracks and any excessive wear of pipe ends.
6. Safety lock bar must be installed and in good condition.
7. Drive pins must be installed and in good condition.
8. Drive pin locks are to be free of weld cracks and in good condition.
9. Mechanical stabilizer must be in place at all times and in good condition.

**NOTE: SERVICE BULLETINS 91-2 AND 91-4 MUST BE COMPLIED WITH FOR SAFE GOOSENECK OPERATION.**

This service bulletin must remain with owner's manual at all times.

If you have any questions on factory standards or procedures on our equipment contact Majestic Manufacturing, Inc. during business hours 8:00am to 4:30pm Monday through Friday Eastern Standard Time at 330-457-2447.

*Dedicated to Safety In the Amusement Industry*

# Majestic

Majestic Manufacturing, Inc. • P.O. Box 128  
4536 State Route 7 • New Waterford, Ohio 44445

**SUBJECT: STABILIZER ASSEMBLY**

**ATTN: OWNER/OPERATOR,**

This Bulletin pertains to operation of your Majestic unit. This Service Bulletin *must* remain with owner's manual. If you have any questions regarding this Bulletin, contact our office at (330) 457-2447, M-F 8:00 a.m.-4:30 p.m. E.S.T. • Fax 457-7490

## SERVICE BULLETIN

Date: May 22, 1991

S.B. Number: SB91-4 Supplement to service bulletin 91-4

Notice:

91-4 refers to a recommended safety feature that may be added to the stabilizer assembly in the field if so desired. The following is a suggested way of adding that safety feature.

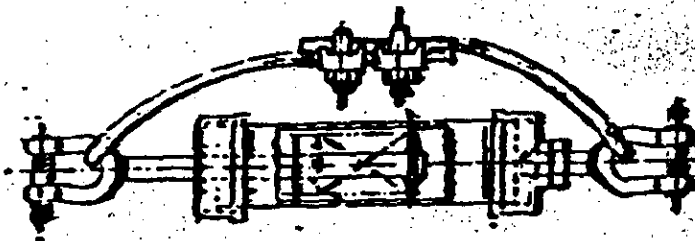


FIGURE 1

Extend stabilizer to maximum travel and fasten cable as shown in Figure 1. We recommend a 5/16" diameter, 7 x 19 strand core galvanized aircraft cable with a 9800# test strength or better.

This service bulletin must remain with owner's manual at all times.

If you have any questions on factory standards or procedures on our equipment contact Majestic Manufacturing, Inc. during business hours 8:00am to 4:30pm Monday through Friday Eastern Standard Time at 330-457-2447.