



**WISDOM
INDUSTRIES, Ltd.**

SERVICE BULLETIN

DATE: FEBRUARY 4, 2000
RIDE: ALL SMALL COASTERS
SUBJECT: COASTER WHEEL BRACKETS
COMPLIANCE DATE: IMMEDIATE

There have been a few instances of cracks in or around the slotted hole in the fixed type wheel brackets used on the smaller coasters, such as the Dragon Wagon, Go Gator, Clatterpillar and Miner Mike.

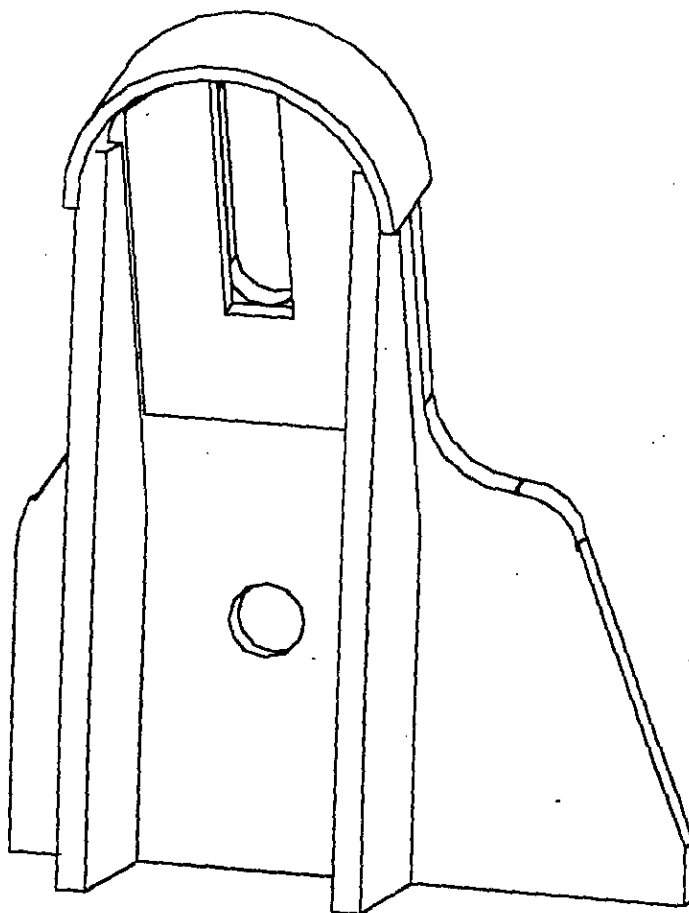
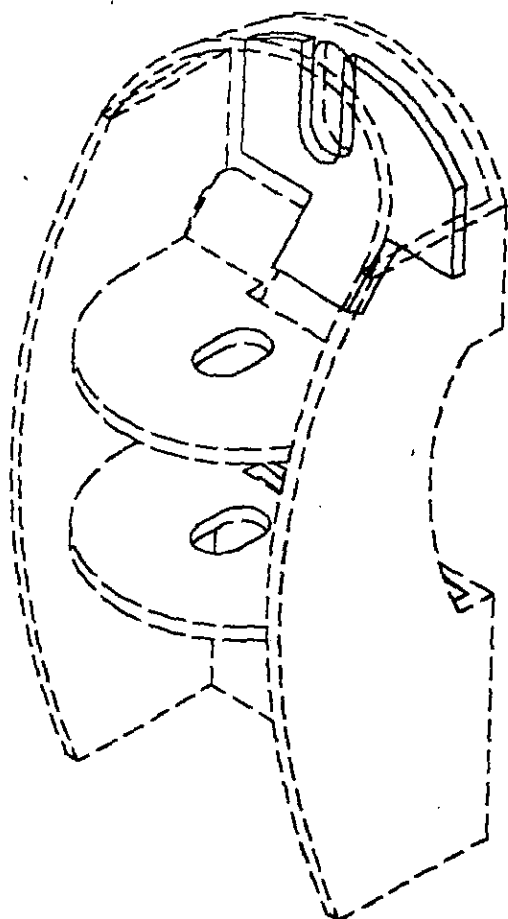
It is important to use only flange type nuts in this slotted area and check nut on a regular basis to ensure it is tight

Cracks can be field repaired. Grind a groove into the crack at least $\frac{3}{4}$ of the thickness of the base metal and slightly beyond the crack in both directions. Make sure area is clean and free of any grease. Weld with E7018 electrode and grind flush where weld or nut comes in contact with plate.

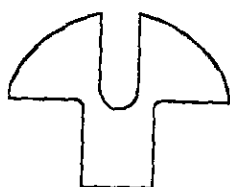
If cracks are found a doubler plate can be added to the wheel slot area. Contact Wisdom Industries for doubler plates. See the enclosed drawing for location of doubler plate.

If you have any questions or concerns please call Wisdom Industries.


REPAIR CRACKS AROUND SLOT BEFORE INSTALLING PLATE. PLACE REINFORCEMENT
 PLATE INTO WHEEL BRACKET ALIGNING SLOT AND TAB. WELD AROUND PERIMETER OF
 REINFORCEMENT PLATE. FLANGE NUT MUST BE USED ON WHEEL BOLT.



WHEEL BRACKETS



REINFORCEMENT PLATES

 WISDOM INDUSTRIES Merino, CO 80741		APPROVED BY:	
SLOT REINFORCEMENT		SCALE:	NTS
		DATE:	02/04/00
IPMENT: COASTERS		DRAWN BY:	SMY
		DRAWING NUMBER:	SBSLOT2

FEB 04, 2000 - 10:44:58 < L:\COASTERS\SLTREN2.DWG >